

Your easy desktop and Internet server solutions are here, free !!!



For client solution, **Eminima** recommends the **PUPPY LINUX** desktop suite, shown here with the desktop shortcuts and its Puppy wallpaper. The size of **PUPPY LINUX**? A little over 50 MB on a mobile mini-CD! This tiny suite means tremendous savings in your computing time and simplifies the operation and maintenance of client PCs in your institution. **PUPPY** runs in Pentium I PCs with at least 64 MB memory and 420 MB hard drive.

Get **PUPPY** from **puppylinux.org**, or visit **www.LittleCandle.Net/partners** to find Puppy users near you, or text **ebarangay** (*your message*) to **2960** for up-to-date guidance.

Reserved for LittleCandle.Net partner's contact info.

The home of Littlecandle.Net is at

Institute of Development Management and Governance
 College of Public Affairs
 University of the Philippines Los Baños
 College, Laguna 4031, Philippines
 Tel/Fax (+63 49) 536 3382

Attention: Rufino Mananghaya, DBA
 raffymn@yahoo.com



EMINIMA is the free software solution..

for **local institutions** wanting to achieve interactivity via PCs, LAN or Internet

- **Colleges** (distance education)
 - **Elementary and High Schools** (Web enhancement and interactivity in teaching)
 - **LGUs** (information kiosks)
 - **NGO/PO/Business** (for easy Web authoring and global/Internet presence)
- also for **national agencies** distributing up-to-date content

- **CHED** (content for higher education)
- **DepEd** (content for basic education)
- **TESDA** (content for skills training)
- **DILG** (public info for LGU telecenters)

For help, visit www.LittleCandle.Net/partners

LittleCandle.Net

or TXT **ebarangay** <*your message*> to **2960**

Eminima (or **EM**) enables the use of practically any personal computer for desktop and Internet solutions at little or no cost of software. The client/desktop solution being promoted in **EM** is currently *Puppy Linux*, while for Internet/LAN, EM offers the *Slax* mini-CD integrated with **EM** scripts (the **Eminima miniCD**, or the **server**).

Instructions about the use of **EM** miniCD are contained in the *index.html* file of the CD. The size of **EM** miniCD is 162 MB, so its ISO is difficult to download and has to be distributed at cost by its advocates. Moreover, to overcome the learning barrier, **EM** enthusiasts offer training and service support to **users**, who are typically **change agents** working in schools, local governments or other organizations. Meanwhile, the Puppy ISO may be downloaded and burned to CD by users as it is only 50-60 MB.

UP, a leading higher education institution, has already adopted free/open-source software, and in fact maintains a download page for the *Slax* desktop ISO. **EM** is using the smaller version of *Slax* as base of its Web publishing and testing solution for schools who want to get started in elearning. Moreover, agencies in education (like DepEd or any innovative school) can **load content to the EM CD and quickly enable teachers to deploy elearning** in their local network or PC. The EM server is equally *useful for information kiosks in local governments or for hands-on training in interactive Web publishing*. National agencies like DILG and TESDA can use the EM CD to *deliver interactive content to their clients*. The *PC for Schools* or *PC for Barangay* programs of the government may not have a free software suite to go with the PC. The **EM** suite of software is ready to go with these or other similar programs.

As **EM is not profit-oriented**, user-advocates (partners) are needed to push **EM** to the grassroots. Income opportunities exist not in software sales or licensing but in training and support of clients. Sign up now at **LittleCandle.Net**.

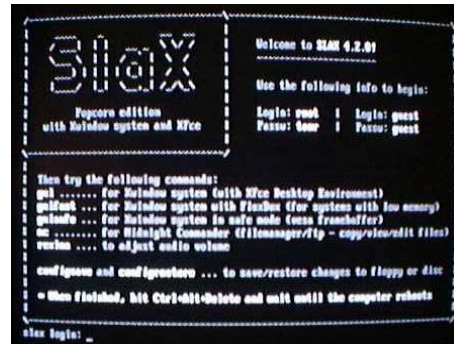
Few steps to launch your own server*

1 - Set PC to boot from CD-ROM

```
Welcome to SLAX Live CD
boot: slax server
```

2 - Boot: *slax server* [Enter]

3 - Login as *root*



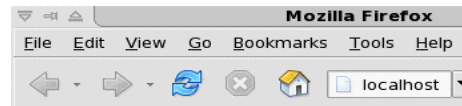
You are now your own **Server Admin**

1 - Enter your chosen screen: *gui*



2 - Start browsing (click on the globe icon)

3 - Enter *localhost*



You are now browsing pages as **User**

1 - Visit *localhost/em/em.php*

You are now 'online' as **Webmaster**

* The *EM* miniCD can be used as both server and client. The *Puppy* miniCD is best for clients (users) only. Users in the network should type 192.168.0.100 to browse the server. See *index.html* in the *EM* miniCD or visit

LittleCandle.Net

EM is a set of minimalist software for interaction between a change agent and his/her clients using a PC or a number of PCs in a network. The software included in **EM** satisfied the following criteria:

- It is free or open-source software, preferably released under the *GNU General Public License or GPL** (see gnu.org).
- The least amount of effort or resources is needed to have the software actually perform the task.
- It enables the change agent to easily store and carry both software and data.
- Local support can be made available for both clients and change agents.

EM came out of the vision of bringing interactive Internet technology to the grassroots, as advocated in the *First Egovernance Conference* at the University of the Philippines Los Baños (UPLB) on March 23, 2004. **Eminima** was presented first as a concept and then as an elearning suite in national elearning conferences in the Philippines, years 2004 – 2005 (see www.elearning.ph).

As of March 1, 2005, **EM** includes the *Slax* (linux-live.org) and *Puppy* (www.goosee.com/puppy) distributions of *Linux* as well as *Apache + PHP* (apache.org and php.net) and scripts for publishing Web pages, creating and administering tests, and getting user feedback.

EM was conceptualized by Dr. Raffy Mananghaya, associate professor of management and pioneer of elearning and egovernance. Development of **EM** began in year 2004 at the Institute of Development Management and Governance (IDMG), College of Public Affairs (CPAF), University of the Philippines Los Baños (UPLB), and the prototypes were tested at the Technology Management Center (TMC), University of the Philippines Diliman (UPD). Coding was done during the author's free time, and testing was done through free Websites for his classes. The author subsequently founded *LittleCandle.Net*, the home of **EM** in the World Wide Web.

*GPL ensures free copying, distribution and modification of software.